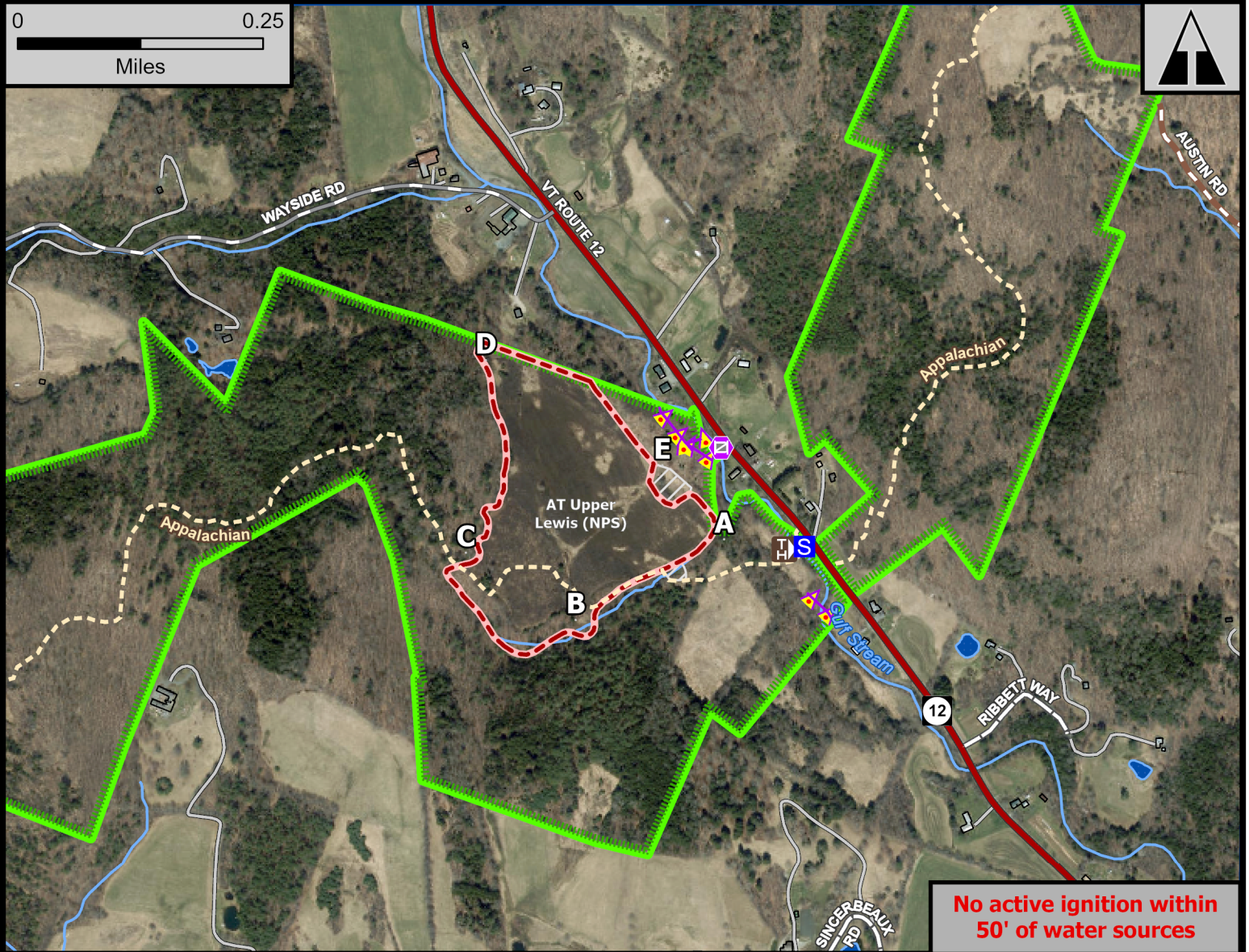


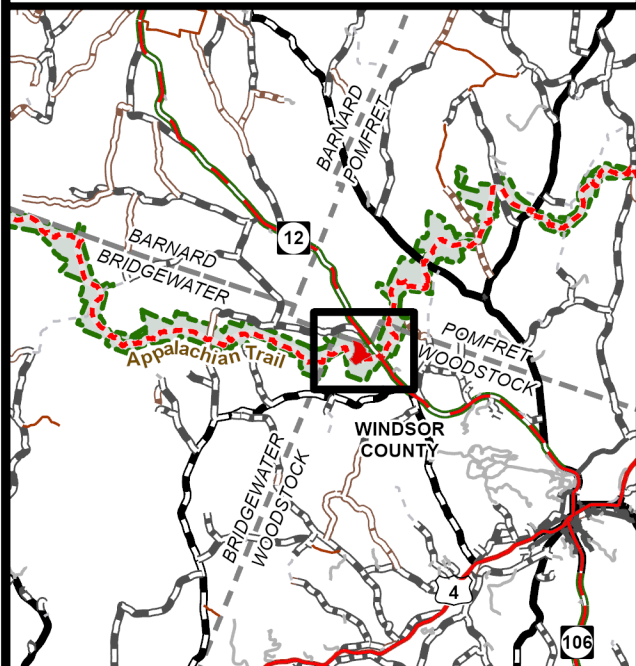
# AT Lewis (NPS)



Geo Group: Woodstock



Green Mountain National Forest



- Gate
- Staging Area
- Structure
- Powerline

- RX Burn Unit
- Unplanned Unit
- Fire Exclusion Area
- National Forest

Rochester Ranger District

Town of Woodstock

Windsor County

43.655°N -72.571°W

Elevation 940 Feet

Complexity: Moderate

Current Year Planned Acres: 28

Last Burned: 2024

Lewis

28

Fuel Model: GR2

Best Access: VT Rte 12 > Woodstock/Pomfret town line

Intel Features: Establish Human Repeater. Appalachian Trail, Protect historic Prosper ski hut and Wildlife Snag. 10-20% Slope as critical holding feature. Notify NPS, GMC and ATC Partners